

the beer cellar

beer cellar

Our Cellar Selection is a collection of unusual, rare and vintage beers amassed for the true aficionado. These are beers of unusual character and extremely limited availability.

lambics

Traditional lambics are some of the most extraordinary beers in the world. Brewed from barley malt and unmalted wheat, uniquely spiced with aged hops that yield no bitterness, fermented by wild, airborne yeasts and classically aged in wooden barrels for years, they are dry, tart, Champagne-like and hugely complex.

Cantillon Rosé de Gambrinus 2003

Belgium, 5% alc./vol.

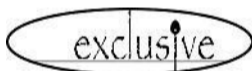
Style: Lambic, Fruit

Expect complex fruity aromas in the nose and an earthy body replete with notes of seeds and skins, but only miniscule residual sweetness. To craft this wonderful ale, pounds of whole raspberries are added to barrels of aged lambic, promoting a fresh fermentation that consumes virtually all of the fruit.

Lindemans Gueuze Cuvée René

Belgium, 5% alc./vol.

Style: Lambic, Gueuze



Lindemans brewery is best known for their line of filtered, sweetened lambics, and for a good while these were the only ones they made until reason finally gave them a swift kick to the groin and they went back to their roots. For that, we are grateful. The palate is a guided journey through shades of mouth-watering acidity, with notes of lemon rind, dry vermouth and damp straw pouncing from the glass.

Oud Beersel Oude Kriek

Belgium, 5.2% alc./vol.

Style: Lambic, Fruit



As beautiful as this deep ruby-coloured cherry lambic looks in the glass, it's even more fantastic going down. This extremely tart and dry lambic carries an assertive stone fruit aroma with a sour taste lightly reminiscent of cherry skin. An ideal aperitif shared amongst friends as a means to open the palate for the meal ahead.

beer cellar

barleywines

The vast variety of flavours from brand to brand is proof that this is one particular beer style that is tough to pin down. A couple of things are certain, though: barleywines are complex ales of high alcohol content, vinous character, and uncanny capacity for ageing. As barleywines age, they become drier, less bitter, and their complex flavours meld together, giving rise to previously masked tastes in the background. Trying a 'vertical tasting' of different vintages is the best way to discover the beauty of a well-aged beer.

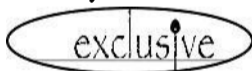
Rogue Old Crustacean Barleywine
Oregon, 10.5% alc./vol.



This is not a beer to be trifled with. When young it is a powerful mix of rich malt, extreme hoppiness and high alcohol. As it ages, however, this monster of an ale also mellows, becoming less bitter and aggressive and more balanced and harmonious in both aroma and taste. What is also astounding is how different this beer drinks from year to year. Currently, we get an herbal, rooty and citrus quality from the '04; and meaty, less sweet body in the '98 with just a hint of tobacco leaf.

Vintage 2004
Vintage 2000
Vintage 1999
Vintage 1998

Anchor Old Forhorn Barleywine Style Ale
California, 9.4% alc./vol.

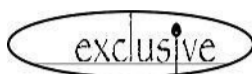


Most barley wines only come of age with significant cellaring, but this one (the first of its style to be brewed in North America) is ready to go straight after bottling, and will only get better as time goes on. Dry-hopped to give it a distinctive citrus bouquet, this smooth and strong ale tastes of sweet dark berries with a serious alcohol warmth to soothe the body and mind.

Vintage 2006
Vintage 2005

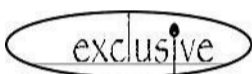
beer cellar
barleywines
Continued

Sierra Nevada Bigfoot Barleywine Style Ale
California, 9.6% alc./vol.



If you know anything about Sierra Nevada Brewing, you know that they rarely do anything halfway. Here you'll find a rich caramel sweetness that melds into a mind-bendingly bitter hoppy middle that still manages to finish dry. While you might think it difficult to believe all this flavour can be crammed into such a small bottle, some American barleywine aficionados consider this one too tame for their masochistic palates. You be the judge.

Brooklyn Monster Ale 2006
New York, 9.8% alc./vol.



This lively barley wine brewed under the watchful eye of master brewer and beer author Garret Oliver is an accomplishment to be savored with every sip. A complex nose of toffee and citrus announces the arrival on the palate of a medium-bodied, warm and leafy hop body that stays on the sweeter side and finishes milder than its high alcohol content would suggest.

Thomas Hardy's Ale 2006
England, 13.2% alc./vol.

Thomas Hardy's is a world-renowned barleywine treasured for its depth of character and unrivalled capacity for ageing. The 2006 is a young and bold barleywine with a potent nose of cherries, stewed apricot and hops, giving way to a vinous, peachy body that is at once tart and surprisingly sweet. Try it once now, and come back in a few years to witness the effects of ageing. We expect the carbonation to lighten, and the flavours to calm and meld into a barleywine of astounding character. (Bonus round! While you wait for that experience, see if you can drink everything else on our menu during the ensuing years.)

beer cellar
barleywines
Continued

Third Coast Old Ale
Michigan, 10.2% alc./vol.



Like most American barleywines, Bell's Brewery's rendition has a rich, hoppy body that you can really sink your teeth into. The difference here is in the malty sweet complexity that brings it on par with the English Thomas Hardy's that we also carry in our cellar. We think that this beer will age beautifully in the cellar, but for those of you wanting a more robust experience, we suggest trying it now.

Mill Street Barley Wine
Ontario, Vintage-specific alcohol content

This winter seasonal from Toronto's Mill Street Brewery was the first barley wine brewed in Ontario for many a year. The rare 2004 is blonde in colour, with a light fruitiness and warming, malty cereal body. The 2005 is a dramatically different offering, with a much deeper hue, rich fruitiness and notes of caramel and chocolate.

Vintage 2005, *11% alc./vol.*
Vintage 2004, *10% alc./vol.*

Lost Abbey The Angel's Share
California, 12.6% alc./vol.



What's the secret behind what is quite simply one of the most highly-regarded barleywines in the world? Well, there's probably a few secrets behind this gorgeous ale that drinks with a whirlpool of vanilla, oak, whiskey, brandy, caramel, cinnamon and marzipan. One thing is for sure: much of this character is due to the 6 month-long bourbon barrel ageing the beer undergoes before bottling. Try not to enjoy this one alone—you'll want to share the experience.

beer cellar
barleywines
Continued

St. Ambroise Vintage Ale '07
Québec, 8% alc./vol.

Although the alcohol content of Peter McAuslan's annual winter seasonal has been steadily decreasing over the years (from 10.2% in 2000 to 9.2% in 2006), we think his grand plan is to achieve a finer balance from previous versions. This is one of the 'cleaner' tasting barleywines on our menu, in that it finishes nice and dry with just a hint of honey hanging on at the end. It's a bit young right now, but if you want an extra burst of fresh hop bitterness in a mild barleywine, why not give it a go.

other rare finds

We continually collect interesting beers that we think will improve with age, and then send them down to the cellar. Below is a selection of some more of these beers of varying styles that we think are now ready to drink. As time goes on, we'll be releasing more of our cellar stock.

Unibroue Édition 2004
Québec, 10.5% alc./vol.
Style: Belgian Strong Ale

Almost annually since the Brewery's 10th anniversary, Unibroue has been producing a celebratory beer to mark the passing of the year. In the 2004, we have the final offering from an independantly-owned Unibroue, as Sleeman took over the company that year. This extremely hard to find amber ale has aged remarkably well, and is perfectly ripe for drinking right now. Satisfyingly sweet, but not overpoweringly so, it has formed a delicious aura of apricots and a mild peppery accent as it slowly aged in our cellar.

Unibroue Édition 2005
Québec, 10% alc./vol.
Style: Belgian Strong Ale

Another anniversary beer from Unibroue, this one is also nice and warming, with a 'secret recipe' consisting of spices that they have left you to your own devices to figure out. Darker in colour than the 2004, it also carries with it a deeper flavour profile, including caramel and dried fruits.

beer cellar
other rare finds
Continued

Unibroue Fringante
Québec, 10% alc./vol.
Style: Belgian Strong Ale

Introduced to the public at the same time as the outstanding beer named Terrible, this strong golden ale from Québec's Unibroue was unjustly ignored in favour of its deep black brother beer. But Fringante is a formidable brew in its own right, with significant spiciness, soft fruit and apparent alcohol content culminating in a softer, soothing finish.

Unibroue Don de Dieu
Québec, 9% alc./vol.
Style: Belgian Strong Ale

A "Gift of God" indeed! This full-bodied Belgian-style wheat beer was launched as a seasonal beer in 1998 and has since joined the brewery's formidable stable of international brands. Think of a Belgian white beer on steroids and you'll have a preliminary understanding of this beer and its coriander-spiced character. But the spice is only half the story of Don de Dieu, the other side being supplied by a richly malty, warming character that suits it well to enjoyment with soft cheeses or solitary, end-of-the-night sipping.

DeuS
Belgium/France, 11.5% alc./vol.
Style: Belgian Strong Ale



Before you ask for a bottle of champagne, try this—perhaps one of the most unique and special beers on our list. DeuS combines the best of two worlds: a beer brewed by the famed Bosteels brewery in Belgium, it is then refined in France, where it undergoes the same maturation and bottling procedure to make champagne. The result is possibly one of the finest beers in the world. Expect a lively body of grape and apple with a unique, dry finish.

beer cellar
other rare finds
Continued

Fuller's Vintage Ale 2005

England, 8.5% alc./vol.

Style: English Strong Ale

Produced with a different recipe every year, the 2005 marks Fuller's return to the combination of fuggles hops and Optic malt last seen in their prized 1999 Vintage Ale. A massive palate of malt, fruits, burnt caramel, and the characteristic bitterness that accompanies every vintage despite the annual changing of ingredients provides for one serious ale that is getting a bit of a brandy tinge as it ages.

Fuller's Vintage Ale 2006

England, 8.5% alc./vol.

Style: English Strong Ale

The 2006 vintage has an assertive alcohol content that makes its presence known in the aroma and body. With a fruity and floral nose, this English strong ale drinks with notes of dates and raisins, with just a bit of farmhouse character thrown in for good measure.

Fuller's Vintage Ale 2007

England, 8.5% alc./vol.

Style: English Strong Ale

The newest release in the acclaimed Vintage Ale series drinks with heavy notes on the caramel/toffee side of things, but also shows some splendid mineral qualities that have been masked in previous vintages. While still a little young, if you prefer some sweetness to balance high alcohol content, this one is worth a try.

Abbaye Des Roc's Grand Cru

Belgium, 8% alc./vol.

Style: Belgian Strong Ale



Brewers of beer reserve the term 'Grand Cru' for their highest achievement, and this—the finest beer from this renowned Abbey brewery—is worthy of the title. A balance of intense complexity is shown here in an aroma of cherries, raisins and peaches; with flavours of caramel, berries, roasted nuts, and well, taste it and discover what else you can find. This is the beer that other beers want to be when they grow up.

beer cellar
other rare finds
Continued

Val-Dieu Winter (Grand Cru)

Belgium, 9.6% alc./vol.

Style: Belgian Strong Ale

exclusive

We've let this superlative ale mellow in our cellar for a few years, and also acquired some of the 2006 vintage to balance out the ticket. Cloudy and deep red with flavours of raisin, prune and fig leaping from the glass, the 'Grand Cru' of Val-Dieu is a beer of such uncompromising body that we highly suggest sampling either vintage as a way to share a simply sublime drinking experience.

Vintage 2005

Vintage 2006

Anchor Our Special Ale 2006

California, 5.6% alc./vol.

Style: Spiced Beer

exclusive

Anchor's Special Ale is produced every winter with a different secret recipe, and the LCBO almost didn't let us bring it to you, because they insist on knowing the exact ingredients of beers imported to Ontario. With a background of spruce and herbs, we think the burgundy-coloured 2006 benefits from the addition of cinnamon and nutmeg, but you'll just have to taste and guess like we did, since no one at this superlative San Francisco brewery is talking.

our beer ice creams are available
for take-out!



\$10.99 per 10 oz. tub. Ask your server for details.